



SCHLOSSBERG LIFT

Schlossbergplatz
 8010 Graz
 T +43 316 887-3391
schlossbergbahn@holding-graz.at
www.holding-graz.at/de/freizeit/schlossberg/schlossberglifte/

ACCESSIBILITY

Accessibility by public transport

Please use the route planner of the Styria Public Transport Network (Verbundlinie Steiermark): <https://verkehrsauskunft.verbundlinie.at/>

Parking

- Kastner & Öhler underground car park, approx. 250 m to the entrance at Schlossbergplatz
- Short-stay parking zone along the Kaiser-Franz-Josef-Kai

ENTRANCE AREA

- Tactile floor guidance system from the tram stop to the entrance
- On the mountain, slightly ascending path over fine grating, approx. 4 % incline
- Cross slope max. 2 %



Access Schlossbergplatz



Entrance



Way inside

VENDING MACHINES (FOR LIFT TICKETS ONLY)

Please note: EUROKEY holders have been able to use the lift for FREE since mid-January 2020!

Language selection for all vending machines: German, English, Italian, French, Spanish, Russian

2 vending machines on the way to the cash desk:

- Journey, ascent and descent, combined ticket with Schlossbergbahn
- Coin insert at **height of approx. 150 cm** (standard max. 110 cm), change dispenser at height of approx. 85 cm
- Ticket dispensing at a height of approx. 75 cm, debit/credit card payment on the right at a **height of 110–120 cm** (standard max. 110 cm), on left at a height of 100–110 cm
- The vending machine on the left is wheelchair accessible with the lower part of the wheelchair



Ticket vending machines

1 vending machine after the turnstile:

- Valley descent only (can subsequently be redeemed after the valley descent)
- Coin insert at **height of 141 cm**, change dispensed at height of 78 cm
- Tickets dispensed at height of 68 cm, debit/credit card payments at height of 100–110 cm
- No wheelchair access under ticket machine

CHECKOUT AREA

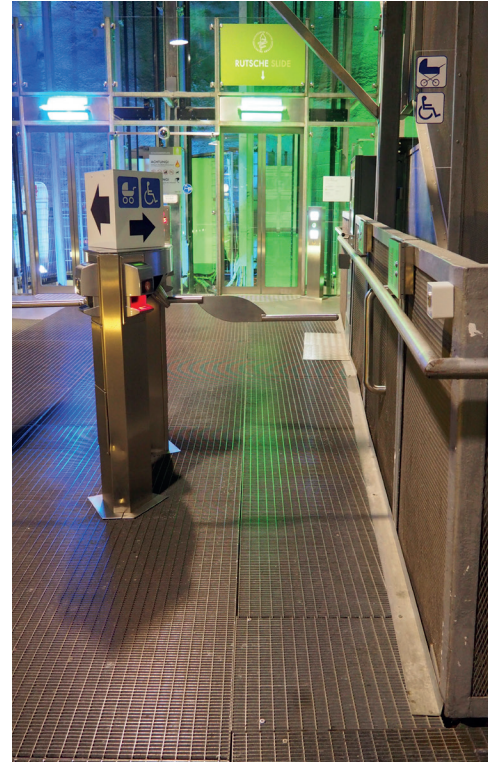
- Please note: EUROKEY holders have been able to use the lift for FREE since mid-January 2020!
- The valley station is manned from 08.00 to 00.30 hrs
- Cash desk on right for Schlossberg lift and slide (cash desk on left for the Märchenbahn only)
- Cash desk height **92 cm** (standard max. 85 cm), no under-desk wheelchair access
- No mobile credit/debit card payment device
- Turnstiles with ticket scanner
- The turnstile on the right is wider (90 cm passage width) and closes with a time delay, it is therefore suitable for wheelchairs and pushchairs;
- The Eurokey can be used to operate the key switch on the right and therefore open the turnstile.



Counter

LIFTS

- The lift on the right basically has 2 exit points: The slide (“Uhrturmkasematten” announcement) and the top station, the lift on the left only leads to the top station
- The “Dom im Berg” exit point is only open on both lifts during events
- Clear door width 108 cm
- Light barriers at a max. height of 100 cm
- Diameter approx. 175 cm (oval interior)
- Space of at least 150 x 150 cm on entry and exit
- Controls at a height of 80–130 cm
- Braille next to the controls (inside and outside)
- Visible and audible confirmation when pressing the pushbuttons (inside and outside)
- Visual display
- Announcement in the lift: name of the exit point, “Türe öffnet” (doors opening), “Türe schließt” (doors closing), “aufwärts” (up), “abwärts” (down)
- Handrails available
- Emergency bell available



Turnstile and lifts

SCHLOSSBERG EXIT:

- Path generally without thresholds, although there are bumps (for example, gutter)
- The gravel road has been made easier for wheelchairs with a fine grating (120 cm wide)
- **No tactile floor guidance system** although the grating can serve as a guidance system from the lift to the nearby café-restaurant
- Turnstile: clear width 90 cm

Vending machine:

- Coin insert at **height of 158 cm** (standard max. 110 cm), change dispenser at height of 95 cm
- Ticket dispensed at height of 85 cm, debit/credit card payments at **height of 118–128 cm** (standard max. 110 cm)
- Not wheelchair-accessible; only tickets for valley descent (to the slide or to the valley)



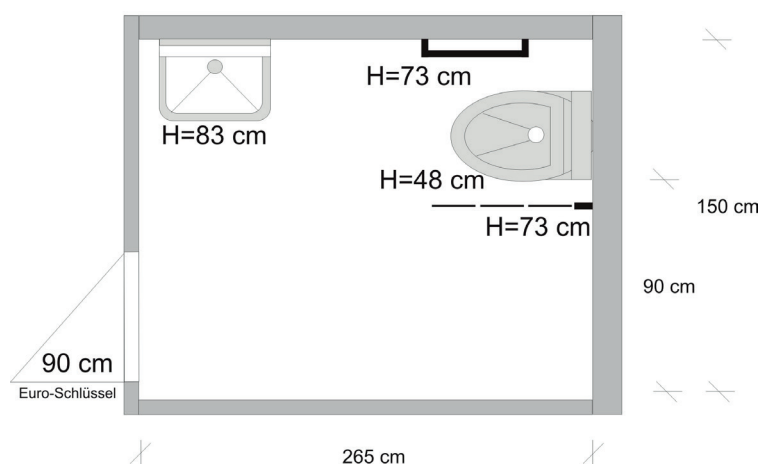
Lift access at Schlossberg

ADDITIONAL INFO

- Dogs allowed (with muzzle)
- The reduced price for people with disabilities is the same as the children’s price
- Accompanying persons travel free of charge
- The “Dom im Berg” intermediate station is only open during events
- Mobile phone number for the Schlossberg lift valley station 0664/8309308 (for emergencies)
- Lift cash desk telephone: 0316/887-3395

DISABLED TOILET

- Public disabled toilet at Schlossbergplatz, on the left side before the entrance to the mountain
- Open daily from 8.00–22.00, outside opening hours open with Eurokey locking system
- Hinged door, clear door width 90 cm
- Dimensions of WC room: 265 cm x 150 cm
- WC height 48 cm
- WC accessible from right, free space 90 cm
- Folding support rail on right at height of 73 cm
- Vertical handrail on the left at height of 73 cm
- Height of washbasin 83 cm
- Mirror extends to upper edge of basin
- **Turning circle smaller than 150 x 150 cm**



Disabled WC

Validity: October 2019, errors and omissions excepted

Source: Capito & Graz Tourism in cooperation with Hartberg Disability Support Group