



BRANDHOF

Gleisdorfergasse 10
 8010 Graz
 T +43 316 824255
restaurant@brandhof.co.at
www.brandhof.co.at

Where can you go and eat after a night at the opera? The traditional *Brandhof* restaurant is the ideal place. It doesn't just offer a wide range of typical Styrian dishes throughout the day, it also serves hot meals in the evening after the show, which is also appreciated by the performers at the opera house. In the summer, an extensive shaded outdoor dining area invites you to relax. The *Brandhof* impresses with its competitive prices and its great selection of drinks.

ACCESSIBILITY

Accessibility by public transport

Please use the route planner of the Styria Public Transport Network (Verbundlinie Steiermark):
<https://verkehrsauskunft.verbundlinie.at/>

Parking

- Designated disabled parking space in the Girardigasse/corner of Gleisdorfergasse, on both sides parallel to the street and in the Luthergasse; just a few meters from the restaurant
- Short-stay parking zone in the surrounding area

ENTRANCE AREA

- Access asphalted
- Swing door, clear door width 2 x 70 cm
- Threshold of approx. 1.5 cm
- 2nd door hinged door with lever handle
- Clear door width 98 cm

Entrance via outdoor dining area (paving stones)

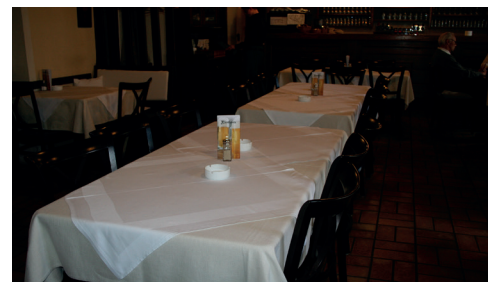
- Hinged door with lever handle
- Relatively high resistance
- Clear door width 90 cm, 3–4 cm step with small ramp



Main entrance



Access from the outdoor dining area



Interior area

INTERIOR AREA

- Tables and chairs movable
- Table height 70 cm
- Most tables with centre table leg



Tables

ACCESSIBLE TOILET

- Access from the restaurant area through three doors via a narrow corridor (partially just **80 cm** wide)
- Disabled WC in the ladies toilets, not signposted separately
- Door from the restaurant to the corridor:
 - Hinged door with lever handle
 - Clear door width 80 cm, **5 cm step!**
- Door to ladies toilets:
 - Hinged door with lever handle
 - **In front of the toilets only approx. 110 cm turning circle**
 - **Clear door width 72 cm** (without a paper basket mounted on the wall, 90 cm)
- Disabled WC:
 - Sliding door, clear door width 92 cm
 - Length 215 cm, width 200 cm
 - WC height 51 cm
 - WC accessible from the left 95 cm, right 85 cm
 - Two lift-up handrails
 - Handrails at a height of 73 cm
 - Washbasin at a height of 81 cm
 - Mirror at height suitable for wheelchair users



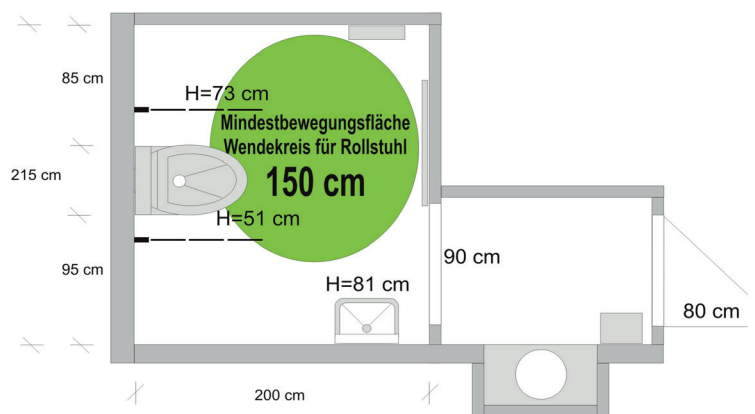
Corridor to WC



WC entrance



WC and WC layout plan



Validity: May 2012,
 errors and omissions excepted,
 Graz Tourism in cooperation with
 Hartberg Disability Support
 Group