



PARKHOTEL GRAZ

Leonhardstraße 8 (Meranpark)

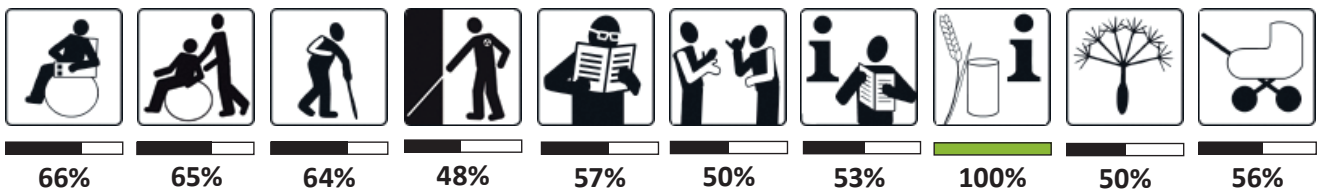
8010 Graz

T +43 316 36 30-0

F +43 316 36 30-50

office@parkhotel-graz.at

www.parkhotel-graz.at



General Information

- 1 wheelchair accessible double room on the 1st floor (accessible by elevator)
- Partner dogs welcome
- Free internet throughout the hotel
- Staff trained in assisting people with disabilities
- **Wellness and fitness area not wheelchair accessible and not reachable by elevator; see details in the source**
- Escape plan available
- **No specific evacuation plan for people with disabilities**
- Acoustic alarm
- **Visual alarm only blinks on the outside**
- Changing table available in the general wheelchair accessible restroom
- High chairs available in the restaurant; straws available upon request

ACCESSIBILITY

Public Transportation

Please use the route planner of Verbundlinie Steiermark:

<https://verkehrsauskunft.verbundlinie.at>

INFORMATION FOR WHEELCHAIR USERS AND PEOPLE WITH MOBILITY IMPAIRMENTS

Parking and Access

- Hotel-owned parking spaces (at the rear entrance)
- Barrier opens after ticket is pulled, control elements **higher than 110 cm** (norm 80 - 100 cm)
- One barrier-free parking space (near the barrier-free rear entrance), clearly marked on the ground (no sign-board)
- Level surface, easily rollable flooring
- Not parallel to the roadway
- Parking space **not 350 cm wide**, but adjacent space can be blocked if needed
- Parking meter: **only 150 x 99 cm** space in front of the machine, control element height 102 - 140 cm (norm 80 - 110 cm), **not accessible from below**
- Access to the barrier-free entrance max. 6% longitudinal slope, **up to 7% transverse slope** (norm max. 2%)

BARRIER-FREE REAR ENTRANCE (ACCESS FROM HOTEL PARKING)

- Covered and threshold-free entrance
- Door opening button and card reader at 114 and 120 cm height (norm max. 110 cm), not needed during opening hours
- Wind lobby with automatic sliding doors, passage width at least 90 cm
- Outer door opens prematurely and closes with a delay, **inner door opens late**
- Approach area on both sides of the doors 150 x 120 cm
- Well-rollable dirt trap mat or grating outside, **carpet inside has waves**



Main entrance



Back entrance

MAIN ENTRANCE (NOT WHEELCHAIR ACCESSIBLE)

- Covered and obstacle-free entrance; **7 cm high step!**

Revolving door

- Door clearance 100 cm; **hard to open; 1 cm door threshold**
- Approach area of 150 x 150 cm **only on the inner side of the door**
- Door handles at standard height (85 - 110 cm)
- Well-rollable dirt trap mat or grating

Swing door next to revolving door

- **80 cm passage width** (norm minimum 90 cm), threshold-free
- **Very hard to open (door closer)**
- **doorknob**, at standard height

RECEPTION & INTERIOR AREA

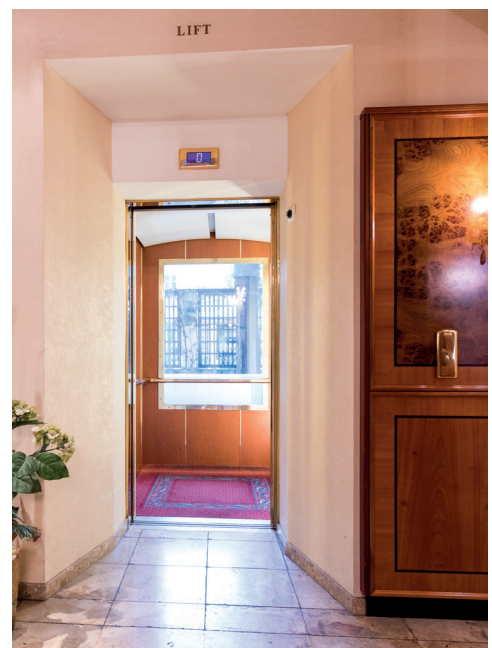
- Reception/waiting area completely level, no thresholds
- Reception: **no lowered area, not accessible from below**; minimum 150 x 150 cm space in front of the reception
- ATM or credit card checkout usable
- Waiting area with sufficient space for wheelchair users and strollers
- Seating available in the entrance hall: **44 cm high** (norm 46-50 cm)
- Interior paths are at least 120 cm wide, level, and free from obstacles
- Carpets are easily rollable



Reception & interior area

ELEVATOR

- Accessible without thresholds, door clearance 88 cm
- Doors open and close automatically, light barriers at a maximum height of 100 cm
- Minimum 150 x 150 cm maneuvering space when entering and exiting
- No downward staircase opposite the elevator door
- Car width at least 110 cm, depth at least 140 cm
- Push buttons at standard height
- Handrail available
- Mirror available, **but not opposite the exit**



Elevator

STAIRCASE

- Step height 15 cm (**first step lower**), depth 35 cm, width 142 cm
- Steps **protrude 2.5 cm**
- Steps **not straight**, landing after a maximum of 20 steps
- Handrail on one side (inside), continuous, at standard height, securely graspable
- Handrail **not extended horizontally at least 30 cm at both ends of the staircase**

GENERAL WHEELCHAIR ACCESSIBLE RESTROOM (1ST FLOOR)

- Accessible by elevator; unisex
- Swinging door with 90 cm passage width, threshold-free
- Approach area of 200 x 150 cm on the opening side of the door
- Approach area of 150 x 120 cm **not available** on the closing side of the door (**only 92 cm width**)
- Door handle at standard height (85 and 110 cm), easy to open
- 50 cm lateral approach area next to the door handle on the opening side, **not on the closing side**
- Door opens outward, can be unlocked from the outside in an emergency
- Maneuvering space of 150 x 150 cm guaranteed in the restroom

Toilet

- Turning space in front of the toilet **smaller than 120 cm x 120 cm** (only 30 cm to the sink)
- Toilet height 48 cm, **short toilet bowl, no back support**
- Toilet approachable from the left, free space at least 90 cm
- Left folding support rail (easy to use), right angled grip; at standard height
- Support bars extend at least 15 cm beyond the front edge of the toilet
- Toilet paper within reach of the folding support rail; **flush not easily reachable from sitting on the toilet**



Entrance - accessible restroom



Accessible restroom

Sink

- Maneuvering space in front of the sink 150 x 150 cm
- Sink height between 80 and 85 cm
- Free height under the sink at least 70 cm, flat plastic drain trap
- Sink can be approached on a width of 100 cm
- Single lever faucet, distance to the front edge of the sink 20 - 35 cm

Other

- Bottom edge of the mirror at **107 cm height** (norm maximum 95 cm)
- Operating level of equipment at standard height
- **No emergency bell** present
- Foldable changing table available in the restroom

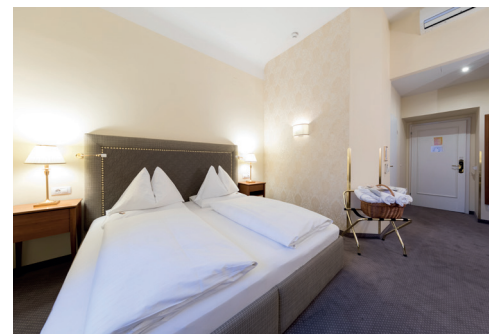
ROOM NO. 115 (ACCESSIBLE BY ELEVATOR)

Doors (2 consecutive doors, identical)

- Swinging door with 80 cm passage width, threshold-free
- Easy to open, no door closer
- Approach area of at least 200 x 150 cm **not available on the opening side of the door (length only 186 cm)**
- Approach area of at least 150 x 120 cm **not available on the closing side of the door (width only 93 cm)**
- Lateral approach area of at least 50 cm next to the door handle **on the closing side of the door not available** (wall right next to it), available on the opening side



Access accessible room



Accessible room

Room

- Free space next to the bed: **78 cm** (norm 150 cm), bed height 47 cm, **not accessible from below**
- Passageway widths in the room at least 120 cm
- Maneuvering space in front of the window 120 x 120 cm (except by the bed)
- Window handle **at 135 cm height** (norm maximum 110 cm)
- Light can be turned on from the bed, coat hooks at height between 85 - 120 cm
- Carpet easily rollable



Accessible room

Bathroom Room No. 115 (including Toilet)
Maneuvering space of 150 x 150 cm available



Bath room



Bath room

Door

- Swinging door, easy to open, passage width at least 80 cm, threshold-free
- Door handle at standard height, door opens outward and can be unlocked from the outside in an emergency
- Approach area of at least 200 x 150 cm **not available on the opening side of the door (length only 176 cm)**, lateral approach next to door handle at least 50 cm
- Approach area of at least 150 x 120 cm available on the closing side, lateral approach next to door handle **less than 50 cm**

Shower

- Roll-in shower, small threshold of 0.5 cm, non-slip floor
- Shower area size: **95 x 175 cm** (norm at least 130 x 180 cm)
- Shower enclosure available (foldable glass wall)
- Vertical and horizontal grab bars (spacing and height at standard level), securely graspable
- Mobile shower seat: **height 51 cm**, seat surface **31.5 x 36 cm** (norm 40 x 40 cm)
- Height-adjustable handheld shower; single-lever faucet at standard height (reachable from sitting position)
- Operating heights of equipment elements **partially higher than 110 cm**

Toilet

- Maneuvering space in front of the toilet **only 60 cm** (norm at least 120 cm)
- Seat height **44.5 cm** (norm 46 - 48), short toilet bowl, no back support
- Toilet flush at standard height (80 - 110 cm), not easily reachable from sitting on the toilet
- Toilet approachable from the right, at least 90 cm space on this side
- **Only one non-folding grab bar on the left** (norm: 2 horizontal and 1 vertical grab bar)
- Grab bar at standard height
- Toilet paper reachable from a sitting position on the toilet

Sink

- Maneuvering space in front of the sink at least 150 x 150 cm
- Top edge at 86 cm, accessible (free height under sink at least 70 cm)
- Underfitted on a width of at least 100 cm, depth at least 45 - 60 cm
- Flat plastic drain trap; single lever faucet

Other

- Mirror extends to the edge of the sink
- Operating levels of equipment elements at most 120 cm height
- Coat hooks and light switches at standard height
- **No emergency bell present**

RESTAURANT AREA (BREAKFAST ROOM, RESTAURANT & BAR)

Access from the Street (Wind Lobby)

- Access level and easily rollable (asphalt)
- Covered entrance and free from obstacles
- 1st door: swinging door with at least 90 cm passage width; **1.5 cm threshold** (on one side)
- **Door very hard to open**; door handle at standard height
- Maneuvering space on both sides of the door at least 150 cm
- 2nd door: **pendulum door** with at least 90 cm passage width; closing mechanism prevents swinging through
- Two-winged, walking wing at least 80 cm wide; horizontal door pulling handle
- **Not easy to open**; no threshold
- Maneuvering space on both sides of the door at least 150 cm
- Lateral approach area of 50 cm next to the door handle on both sides of the door
- Door handle at standard height; dirt trap mat easily rollable



Ramp to bar

© Parkhotel Graz



Restaurant



Bar

INTERIOR AREA

- Underfitted tables available in all rooms (80 cm width, 70 cm underfitted height); underfitted depth mostly less than 60 cm due to the central foot
- Seating with stable arm and backrests, seat height 46 - 50 cm
- Clear passage width of main aisles at least 100 cm
- Breakfast buffet with service
- **Counter height 90 cm, no lowered area, not accessible from below**
- At least 150 x 150 cm maneuvering space in front of the counter
- Food offerings located at most 120 cm height
- **Garden terrace not accessible for wheelchair users due to gravel**
- Coat rack: clothes hanger or hooks too high (170 cm instead of max. 120 cm)

BAR

- 2 steps: **18** and 16 cm high, at least 30 cm deep, at least 120 cm wide, front edge marked
- Handrail **higher than 90 cm**, securely graspable
- Steps bypassed by ramp
- Ramp **114 cm wide** (norm at least 120 cm), straight, **longitudinal slope 8.5 - 9%**
- At the beginning and end of the ramp, maneuvering space of at least 150 x 150 cm
- Handrail on one side, **95 cm high** (norm maximum 90 cm), securely graspable

INFORMATION FOR BLIND AND VISUALLY IMPAIRED INDIVIDUALS

PARKPLATZ UND ZUGANG

- Hotel-owned parking spaces (at the rear entrance)
- Parking meter **not tactilely discernible**; control elements tactilely recognizable
- Path from parking lot to entrance consistently illuminated; **not free from obstacles**

BARRIER-FREE REAR ENTRANCE (ACCESS FROM HOTEL PARKING)

- Covered and threshold-free entrance; **no tactile floor guidance system**
- Wind lobby with automatic sliding glass doors, **not sufficiently contrasting markings**
- Outer door opens prematurely and closes with a delay, **inner door opens late**

MAIN ENTRANCE

- Covered and free from obstacles
- **No tactile floor guide lines**
- Revolving door: **hard to open**; made of glass, **not sufficiently contrasting markings**
- Swinging door next to revolving door **very hard to open (door closer)**;
- Made of glass, **not sufficiently contrasting markings**

RECEPTION & INTERIOR AREA

- Reception area **not tactilely discernible**;
- Reception glare-free and adequately illuminated; however, **not adequate lighting in all areas of the hotel**
- **Room labels and floor designations not tactile**
- Signage high-contrast and well-lit

ELEVATOR

- Push buttons only tactilely detectable inside, **not outside**; buttons at standard height
- Pressing the buttons is **not acoustically confirmed**
- display not easy to read
- **no audible signal or announcement when the lift arrives**
- Handrail available

STAIRCASE

- Step height 15 cm (**first step lower**), depth 35 cm, width 142 cm
- Steps **protrude 2.5 cm**, entry and exit steps **not designed in contrasting colours** at the front edge
- Steps **not straight**, landing after a maximum of 20 steps
- Handrail on one side (inside), continuous, at standard height, securely graspable
- Handrail **not extended horizontally at least 30 cm at both ends of the staircase**

ROOM NO. 115 (ACCESSIBLE BY ELEVATOR)

- **no tactile floor guidance system**
- all doors easy to open, no door closer
- acoustic alarm

RESTAURANT AREA (BREAKFAST ROOM, RESTAURANT & BAR)

- pendulum door made of glass, **not sufficiently contrasting markings**
- Breakfast buffet with service
- Table with sufficient noise reduction available
- Menu **not in large and contrasting font**
- 2 steps in the bar area: **18** and 16 cm high, at least 30 cm deep, at least 120 cm wide, front edge marked
- Handrail present, securely graspable

GENERAL WHEELCHAIR ACCESSIBLE RESTROOM (1ST FLOOR)

- Accessible by elevator; unisex
- Door easy to open, opens outward, can be unlocked from the outside in an emergency
- Fixtures and fittings stand out in visual contrast from the environment
- **No emergency bell** present

INFORMATION FOR HEARING IMPAIRED AND DEAF INDIVIDUALS

- **No inductive hearing system at reception**
- Elevator: Pressing the buttons is visually confirmed inside and outside, including emergency button

ROOM

- **No visual alarm system**
- Television with teletext available
- Restaurant/breakfast area: also tables with glare-free lighting

INFORMATION FOR ALLERGY SUFFERERS

- Carpets in hallways prone to collecting dust
- Rooms have **dust-prone carpets and curtains**, restaurant area not free from dust-prone upholstered furniture and curtains
- Staff trained in food allergies
- Offers for food allergy sufferers possible upon request

As of March 2022 | All information without guarantee

Source: http://www.bereit-fuer-barrierefreiheit.eu/de/Betriebe/?xt=CEDOSCheckResults&xtMethod=showDataset&cat_id=1533&tobj_id=2982